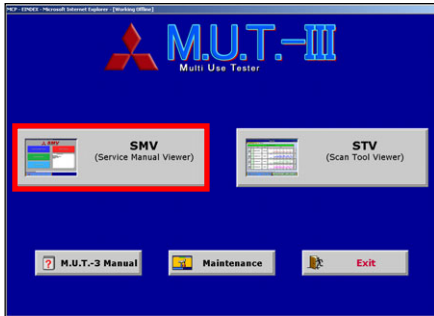


Operating the Service Manual Viewer

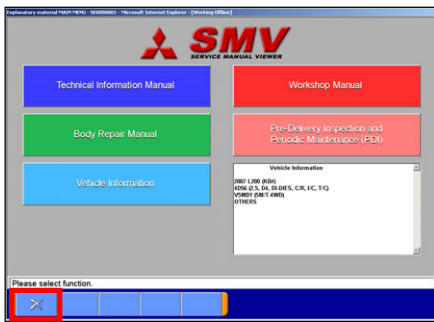
1. Starting SMV (Service Manual Viewer)



< M.U.T.-III Start Screen >

(1) Starting SMV

When pressing **SMV** button on M.U.T.-III Start Screen, SMV (Service Manual Viewer) will start up.



< SMV Main Menu >

(2) SMV Main Menu Screen

When pressing **X** button on SMV Main Menu, you can close the current window.

2. Details of SMV Main Menu Screen

The details of each button are as follows.

- Technical Information Manual

..... To view the contents of *'Technical Information Manual'*
- Workshop Manual

..... To view the contents of *'Workshop Manual'*
- Body Repair Manual

..... To view the contents of *'Body Repair Manual'*
- Pre-Delivery Inspection and Periodic Maintenance (PDI)

..... To view the contents of *'Pre-Delivery Inspection and Periodic Maintenance Manual'*
- Vehicle Information

..... To select vehicle models to view the manuals.
- Vehicle Information

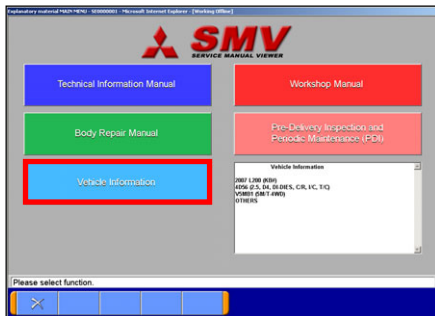
2007 L200 (KBB)
4D56 (2.5, D4, DI-DIES, C/R, I/C, T/C)
V5MB1 (6M/T-4WD)
OTHERS

..... Currently selected vehicle information is displayed on this window.

It shows 'model year', 'model', 'engine' and 'transmission' selected on Vehicle Information setting screen.



3. Vehicle Information Setting

Before viewing the manual contents, please confirm / select the vehicle model by following steps.
(No need before viewing the 'Pre-delivery Inspection & Periodical Maintenance Manual (PDI)')



- (1) When selecting **Vehicle Information** on SMV main menu, the next 'Vehicle information setting screen' will appear.

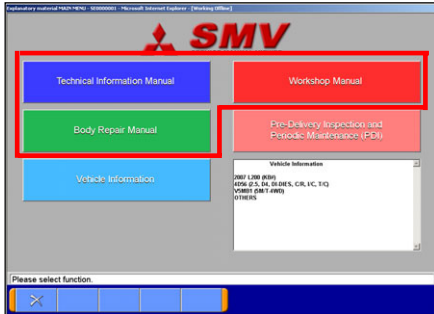


- (2) Currently selected Vehicle information is displayed in a field of each item. (Blank space means information of the item is not selected.)
 - When you modify a part of vehicle information, press an item button you want to modify, and reselect the information.
 - When you modify whole vehicle information, press  button and reselect the information.
 - When you press  button, history of vehicle information setting is displayed, and you can reselect it.

When you close this screen, press  button.

4. View Method of Each Manual

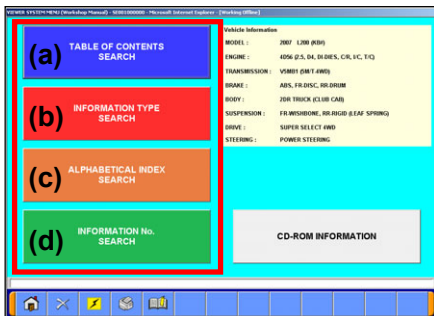
4-1. Search Manual Page



- (1) Select a manual button (**Technical Information Manual**, **Workshop Manual** or **Body Repair Manual**) on the SMV Main Menu. **view the manual**


Note:

As for **Pre-Delivery Inspection and Periodic Maintenance** button, refer to Section 5.



- (2) Select a search method from (a) (b) (c) (d) corresponding to your purpose to display appropriate page of the manual.

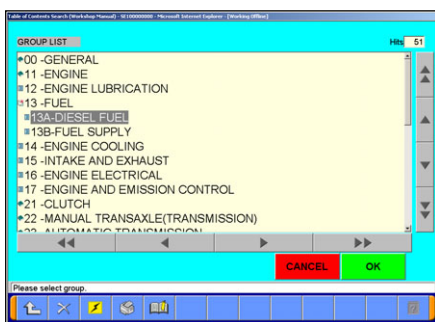
Note:




When pressing  button on this screen, you can return to the SMV Main Menu.

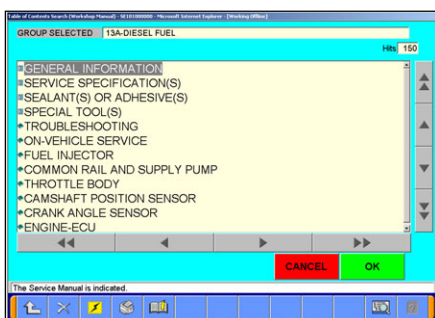


(a) Table of Contents Search

Search information using table of contents.



- (i) Group List of selected manual appears. When you press a title with  mark, the mark turns to , and titles in lower layer are displayed. Select a group title with  mark and press **OK** button.

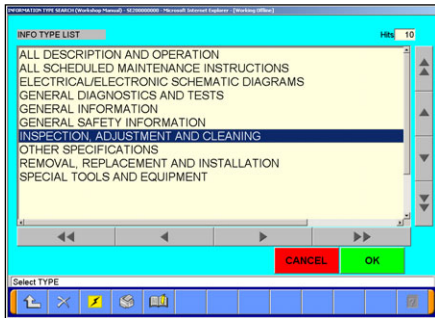


- (ii) Opens the group and displays next list. Select a title you want to view and press **OK** button. -- to 4-2.

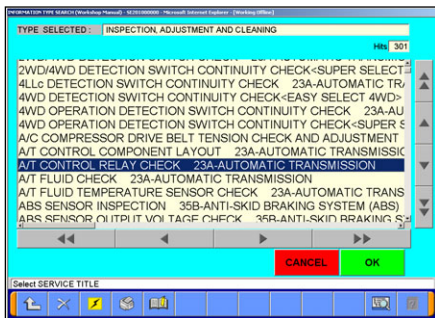
INFORMATION TYPE SEARCH

(b) Information Type Search

Search information by narrowing down information type such as 'Troubleshooting', 'Removal and installation', 'Circuit Diagram' etc.



- (i) Select an information type to search and press **OK** button.

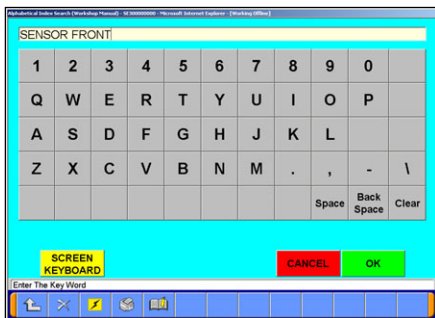


- (ii) Select an information title to view from narrowed list and press **OK** button. -- to 4-2.

ALPHABETICAL INDEX SEARCH

(c) Alphabetical Index Search

Search information using the Alphabetical Index



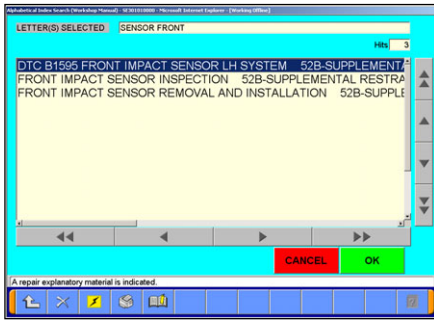
- (i) Enter a keyword of searching information and press **OK** button.

When narrowing down the search with two or more words, separate each word with a space.

SCREEN KEYBOARD ... Launch On-screen keyboard
When you close the keyboard, click **X**.



Service Manual Viewer

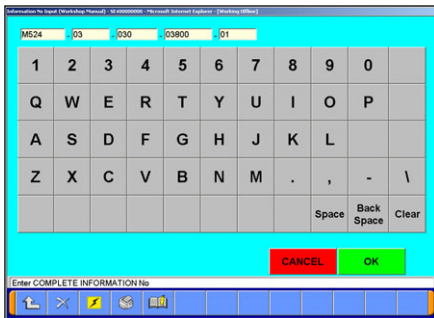


- (ii) Information titles including the keyword are displayed alphabetically. Select a title to view and press **OK** button. -- to 4-2.



(d) Information No. Search

Search information by entering complete Information No.



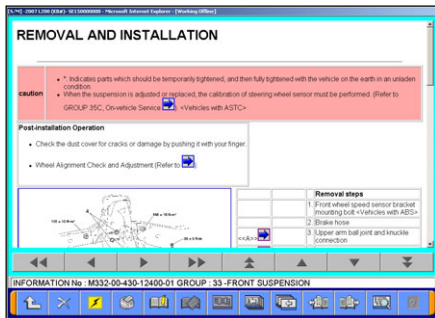
- (i) Enter the searching Information number completely and press **OK** button.-- to 4-2.

Note:












Information No is the number assigned to each page of manuals. It appears along the bottom edge of each manual display screen.

(Or pressing  displays it.)

4-2. Display Manual Page



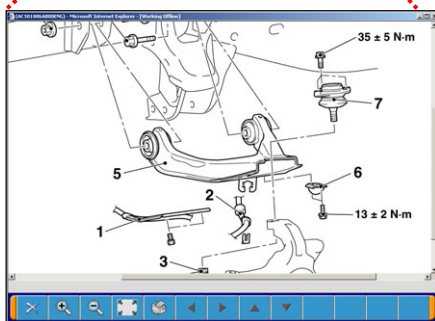
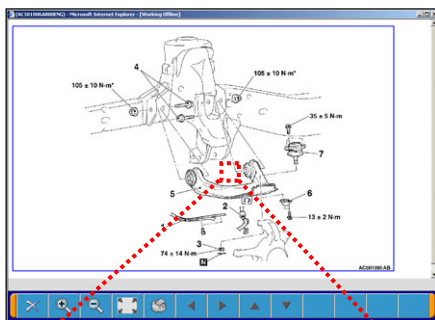
Displays the appropriate page of the manual.





-  ... Return to the select a search method screen
-  ... Close the current window
-  ... Starting the SMV (refer to 4-2-3)
-  ... Print screen
-  ... Bookmark (refer to 4-2-1)
-  ... MSB (Mitsubishi Service Bulletin) (refer to 4-2-2)
-  ... Go to the Table of contents including currently displayed title.
-  ... Back to the last page
-  ... Back to previous page
-  ... Go to next page
-  ... Return to the list screen at search

• Illustration Zooming

Clicking a boxed illustration on manual pages opens a full-page illustration window (left fig.).

Clicking a point on the window allows further zooming.




-  ... Close enlarged illustration
-  ... Zoom in
-  ... Zoom out
-  ... Back to initial setting of illustration window

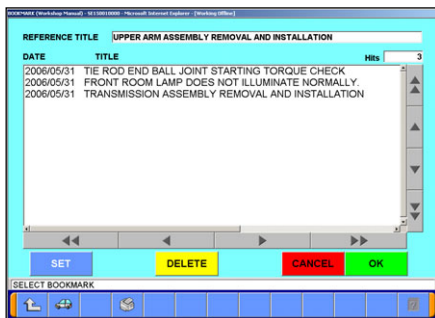
Note:

The illustration will move around the point where clicked.


4-2-1. Bookmarking Function

(1) Register Bookmark

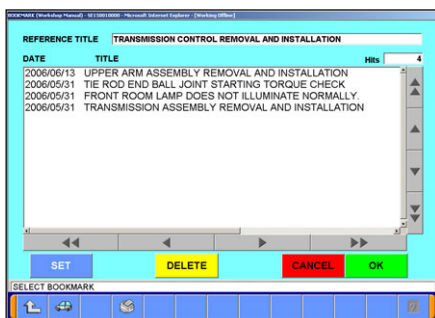
Press  on registering page, and the left screen appears. Press **SET** then **OK** button.



(2) Display the Bookmarked Page


When pressing  during the SMV is running, the left screen appears. Select a title of the page to be displayed, and press **OK** button.

When dropping bookmark, select the title and press **DELETE** then **OK** button.

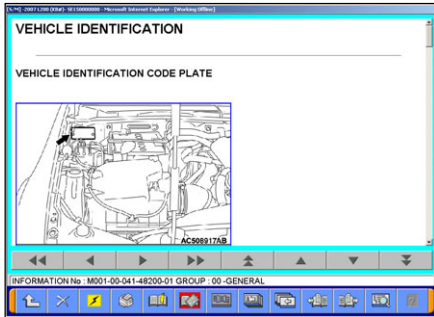


Service Manual Viewer


4-2-2. MSB View Function

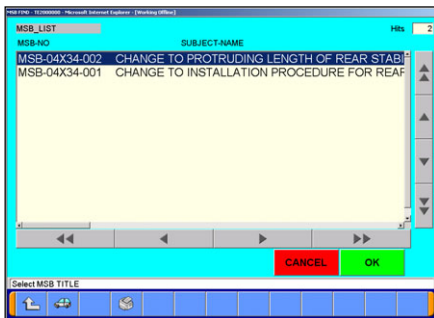
If function button  appears, the page has been revised and you can check the revision information by viewing electronic MSB (Mitsubishi Service Bulletin).

(1) Press  button.




(2) If the page has two or more revision information, the left screen appears. (If not, goes directly to (3))


Select a title you want to check, then press  button.

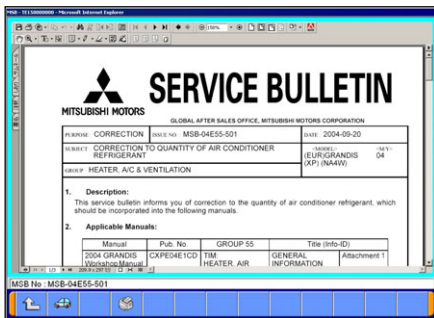


(3) The MSB is displayed.


When you print out the full page MSB, press  icon on upper area of the screen.

Note:

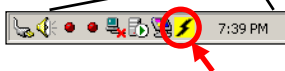
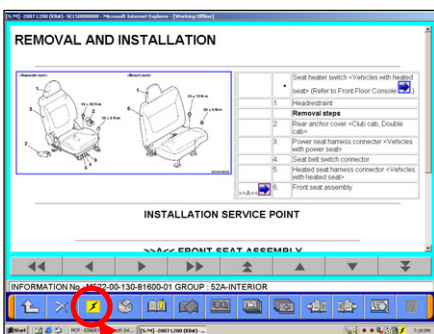
Pressing  allows only to print the currently showing screen.



4-2-3. SMV View Function (multi window type)

(1) On the manual viewer screen, another manuals can also be started up by pressing  button.

As it enables to browse multiple manuals, so it is possible what Wiring diagram can be browsed while doing diagnosis each DTC.

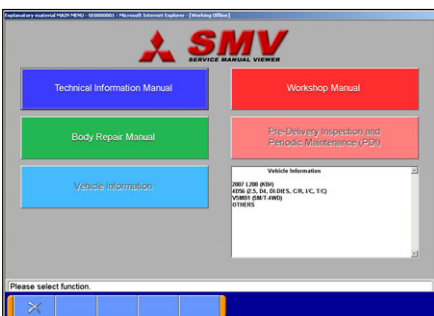


(2) Manual select screen.

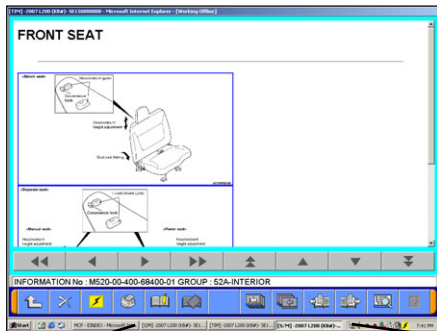
Select manual to be browsed.

Note:

Vehicle Information button is not activated.



Service Manual Viewer

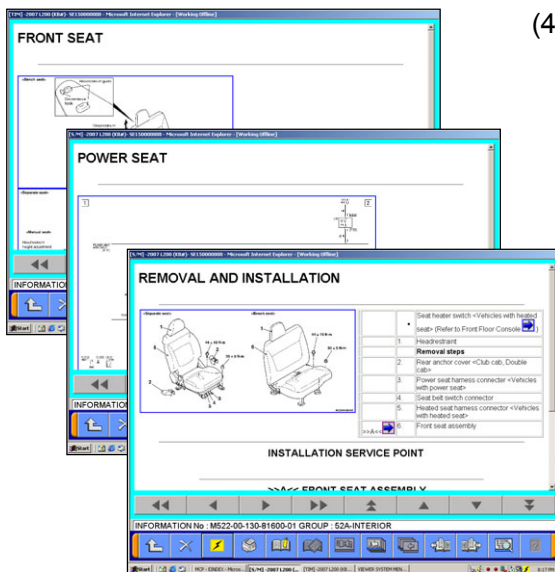
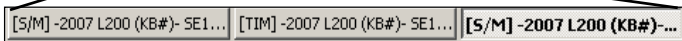


(3) Shift of Manual

Select content you want from Manuals displayed on the task-bar button of the screen.


Note:

Manual in different kind of vehicles cannot be browsed simultaneously.



(4) On Manual Viewer

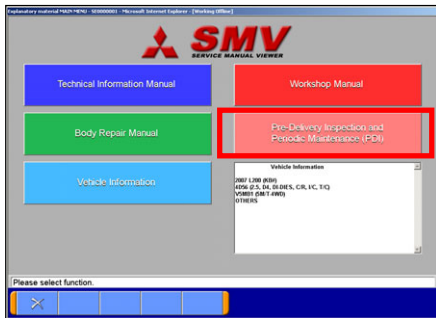
SMV that would be started up for the first time is called SMV(Main), and others are called SMV(Sub).

-When SMV(Main) will be closed by  button, other SMV(Sub) will be also closed altogether.

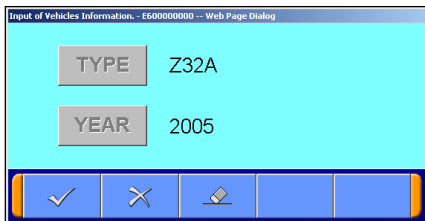
-Each Manual(Sub) can be closed individually.

-Select content you want from Manuals displayed on the task-bar bottom of the screen.

5. View Method of PDI Manual



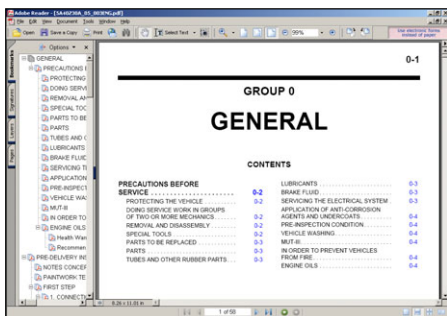
- (1) Select the **Pre-Delivery Inspection & Periodical Maintenance** button to view the contents.



- (2) A confirmation message of vehicle type will be displayed.
- When the information is proper, press button. --to (3)
 - When you modify either TYPE or YEAR, press the button and reselect the information.
 - When you modify whole information, press button and reselect the information.



- (3) Viewer starts by pressing button on (2). Select a language to display the PDI.



- (4) The file of 'Pre-delivery Inspection & Periodical Maintenance Manual' is displayed.
- When you close the window, click the , or select [File] then [Close].